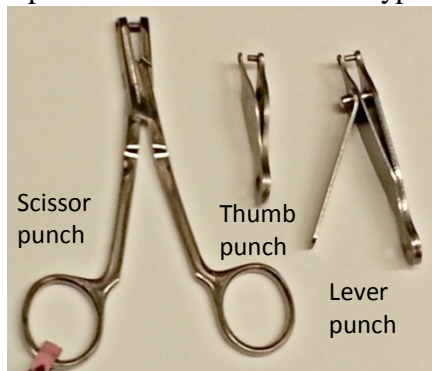


FLSC Standard Operating Procedure for Rodent Ear Punch Identification

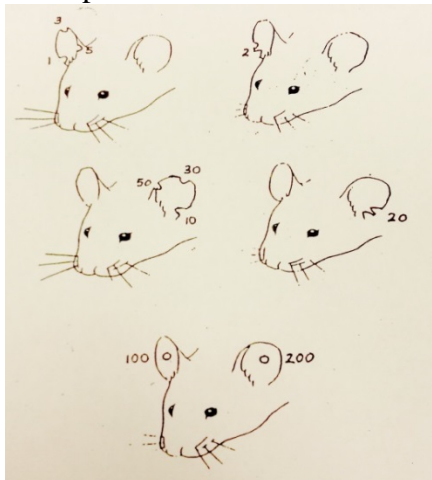
Equipment: Ear Punch Ear Punch Chart

Procedure: Identifying individual rodents with ear punches:

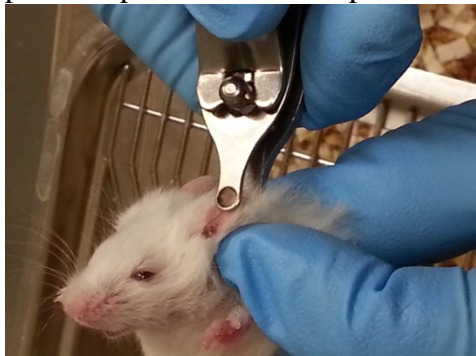
1. Select the ear punch for use. There are 3 types of punches available.



2. Determine the ear punches needed to correspond to the animal's experimental number or ear tag number according to the ear punch chart. Punches will be notches or holes based on the animal's ID number.



3. Scruff the rodent and restrain so that the ears are easily accessible. Place the ear margin in the punch so that the hole of the punch is positioned on the pinna in the desired position.



5. Close the punch quickly and firmly.

6. Gently lift the punch away from the ear. The punch may not fully cut through the ear, requiring you to release the punch and try again in the same spot. Avoid pulling or twisting the punch as that may tear the ear.

7. Before storing ear punch equipment, wash and rinse with alcohol and thoroughly dry to avoid rusting.